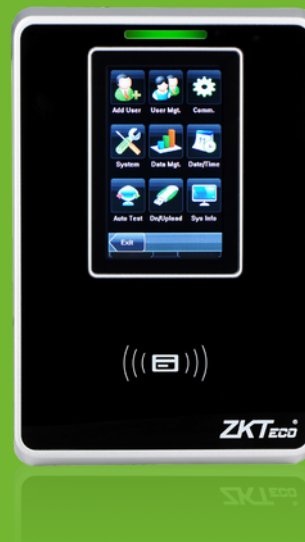


# SC705

## Touch Screen RFID Time & Attendance Terminal



SC705 is a 13.56 MHz proximity attendance management terminal incorporated with 3" TFT LCD. The color display and touch screen operation offers a user-friendly and easy menu management. The terminal includes standard Mifare RFID technology, with internal Wifi configured according to 802.1x standards authentication protocol.

The integrated push sdk protocol allows the terminal to communicate in real time to attendance management software through Ethernet, Wifi or external POE. It can also operate on standalone mode, through USB flash drive data transfer.

The added feature of a 3" interface window offers the option of displaying informative messages, managed directly from software.

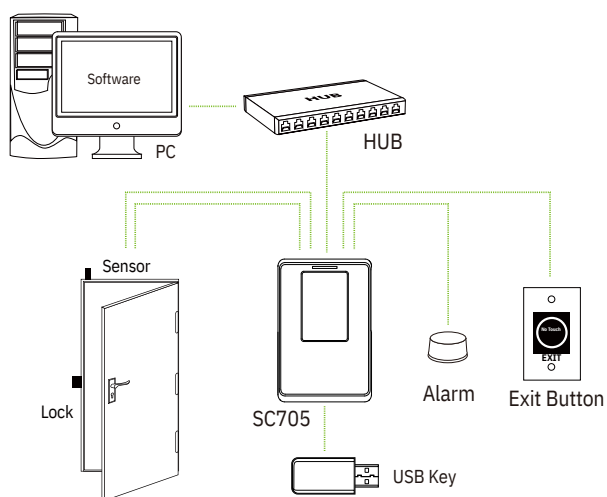
### Features

- User friendly 3-inch TFT color display and touch screen
- Embedded with PUSH firmware to integrate with 3rd party time management software
- Incorporated with Mifare card reader
- Stores up to 30,000 cards and 100,000 records
- Relay outputs for optional electric lock and alarm; Digital inputs for door status sensor and exit switch.
- Audio and Visual indication using speakers and LEDs
- Optional Multi-language.
- Customizable displaying messages

# Specifications

Firmware	PUSH SDK
Display	3 Inches Touch Screen
ID Card Capacity	30,000
Logs Capacity	100,000
Communication	TCP/IP, WiFi, USB Host
Standard Functions	Mifare card, Automatic Status Switch, T9 input, Multi-verification
Access Control	Method 3rd Party Electric Lock, Door Sensor, Exit Button, Alarm
Interface Power Supply	12V/3A, External PoE
Operating Temperature	0°C - 45°C
Operating Humidity	20% - 80%
Dimensions (H×W×D)	160×104.7×36mm

## Configuration



## Dimensions (mm)

